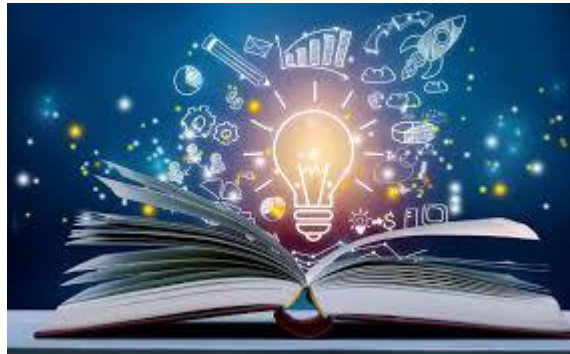


# Year 11 Assembly

30<sup>th</sup> September 2024

# Why do you need school?



# The 'Gibson' **apple** tree. The 'fruits of our labours'.

Weather – what is your  
social/ environment  
like?



Fertiliser and gardening  
tools?  
What strategies can you  
use to help you grow?

Trunk and roots – What  
are your core beliefs?  
How strong are you?

# Enrichment numbers w/c 23rd Sept:

- **Monday – 86** – numbers are low for **English!**
- **Wednesday – 119 Maths**
- Thursday – No enrichment – Science
- **Friday – 102 (92) – History, Geography and MFL.**



# Y11 TRIAL EXAMS OCTOBER 2024

All exams will take place in the sports hall or access arrangement room.

## WEEK 1

DATE	MONDAY 7 <sup>TH</sup> OCTOBER	TUESDAY 8 <sup>TH</sup> OCTOBER	WEDNESDAY 9 <sup>TH</sup> OCTOBER	THURSDAY 10 <sup>TH</sup> OCTOBER	FRIDAY 11 <sup>TH</sup> OCTOBER
EXAMS	7:45 Pre examination booster session - Atrium  <b>8:30AM</b> Mathematics Paper 1 (1 hour 30 mins)	7:45 Pre examination booster session - Atrium  <b>8:30AM</b> English Language C2 (2 hours)	7:45 Pre examination booster session - Atrium  <b>8:30AM</b> Mathematics Paper 2 (1 hour 30 mins)	<b>NO EXAMS</b>	7:45 Pre examination booster session - Atrium  <b>8:30AM</b> Mathematics Paper 3 (1 hour 30 mins)

# English GCSE Pod Reminder:

## Y11 homework. Due 3rd October

1 student has completed this assignment.

### Total Class Completion:

11X/En1 (10/24 students)

11X/En2 (5/25 students)

11X/En3 (2/22 students)

11Y/En1 (9/29 students)

11Y/En2 (7/27 students)

11Y/En3 (7/28 students)

11Y/En4 (2/18 students)

11Y/En5 (2/10 students)



# Rewards trip – Trafford Centre

## 25<sup>th</sup> October 2024

Letter is ready...

# SHOP



# EAT



# PLAY

